



FOOD & BEVERAGE

International Freight Forwarders

[#verticalsolutions](#)

ALBINI & PITIGLIANI
INTERNATIONAL FREIGHT FORWARDERS



WITHCARE



The Food & Beverage sector is a “new entry” of the ALPI group, which today offers the expertise of a qualified team dedicated to the shipments of Food & Beverage. Urgency, temperature controlled shipments, and cool chain maintenance are at the heart of this industry.

Our staff is able to support every request during all the various steps of shipping, ensuring complete assistance and impeccable service. We have also selected a trusted network of reliable suppliers to satisfy our customers.

- Proper Documentation
- Urgency
- Temperature Controlled Shipments
- Cool Chain Maintenance
- Special Equipment
- Qualified and Dedicated Team
- Flexible Supply Chain
- Carrier Selection Programs
- Procedures Knowledge



Food & Beverage



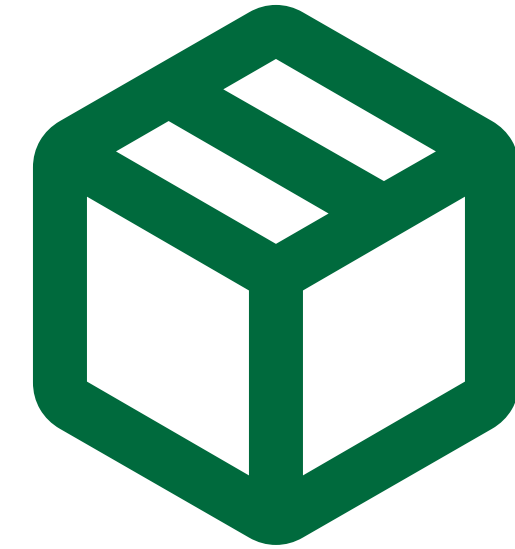
Air Transport

- Cargo freighter size
- Fresh & dry products handling
- Fresh & dry pick ups
- Buyer consolidation
- Own consolidation, urgent service
- Cargo protection against damage and Build-up ULD



Ocean Transport

- FCL service
- Scheduled LCL service
- Buyers consolidation
- Bulk cargo
- Fresh & dry products handling
- Fresh & dry pick ups
- Scheduled Fresh and Frozen LCL service



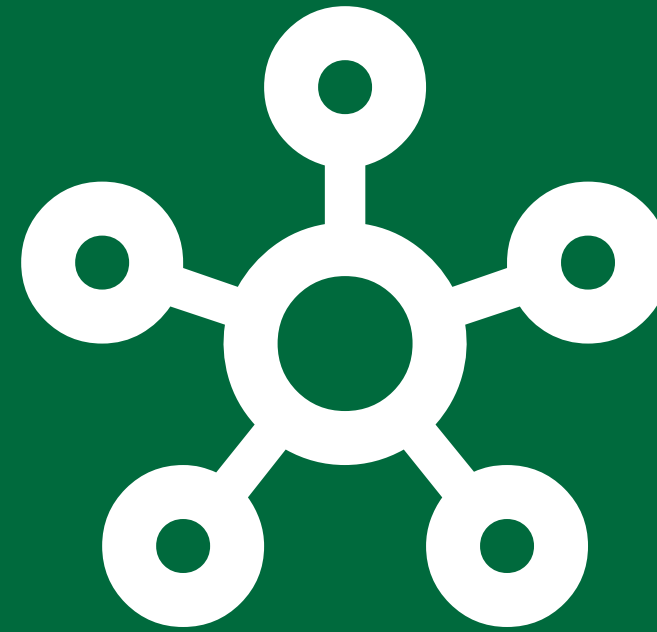
Logistic

- Warehousing
- About 80,000 square meters
- Pick & Pack
- Late pick up
- Same day pick up
- CCTV camera



Strenght 1

- Multi temperature
- Buyer consols
- Temperature recording devices available
- All food shipments are controlled by our offices specialized in dry and perishable goods



Strenght 2 5 Core Services

- Repack for temp. sensitive products export if needed
- Quality Control
- Value Added Services
- IT assets
- Reverse Logistics Management



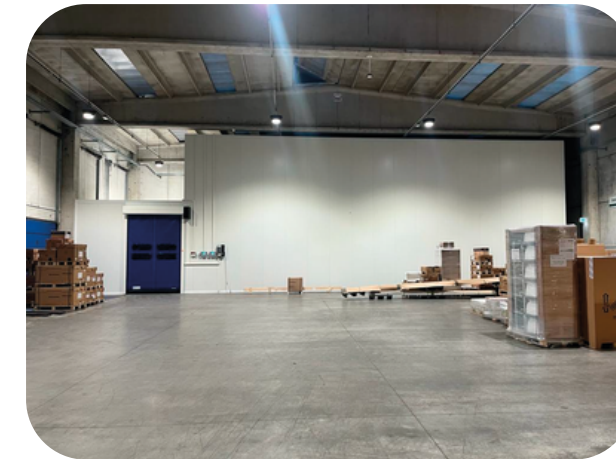
Strenght 3 Quality Control on 3 levels

- Compliance: check quantities, proper temperature at arrival
- Documents compliance
- Visual check: look for damaged or unconditioned or dirty products

Nola - Napoli

Area Industriale - Loc. Boscofangone Edificio Vega 29
Nola (NA) - 80035

-20 °C / +20 °C



Lemizzone di Correggio – Reggio Emilia

Via Provinciale per Reggio n. 63
Lemizzone di Correggio (RE) - 42015

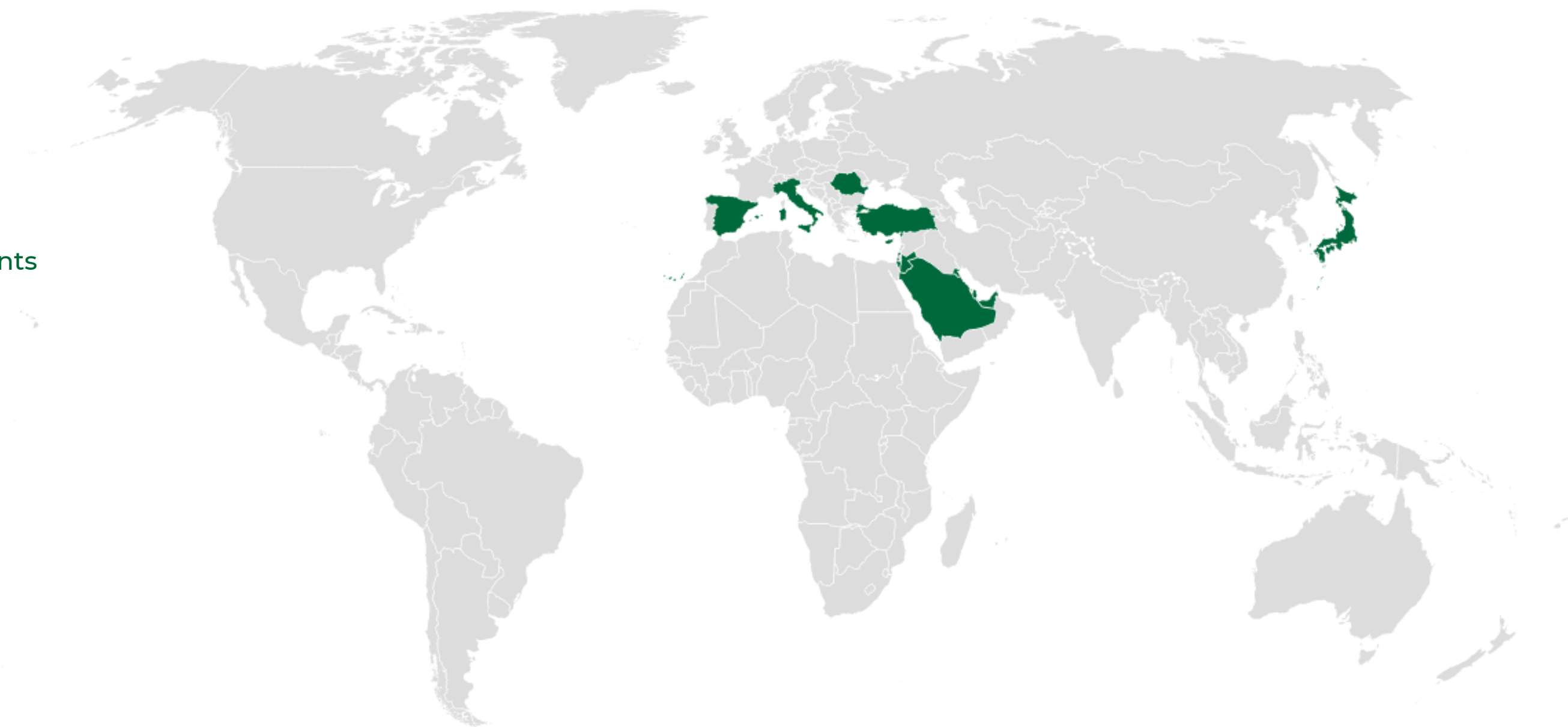
-20 °C / +20 °C

Warehouses



ALPI Service

- Physical Inspections
- Temperature control
- Packing, Labeling, Storage
- Quality Control
- Reverse Logistics Managements
- Collection from Selected Origin Point



ALPI Warehouse

- Dry Food
- Frozen Food (-20 °C)
- Fresh Food (+2/+8 °C)

Countries

- Italy → Middle Est
- Spain → Turkey
- Japan → Romania

Middle East



Denmark



Spain



Turkey



Romania



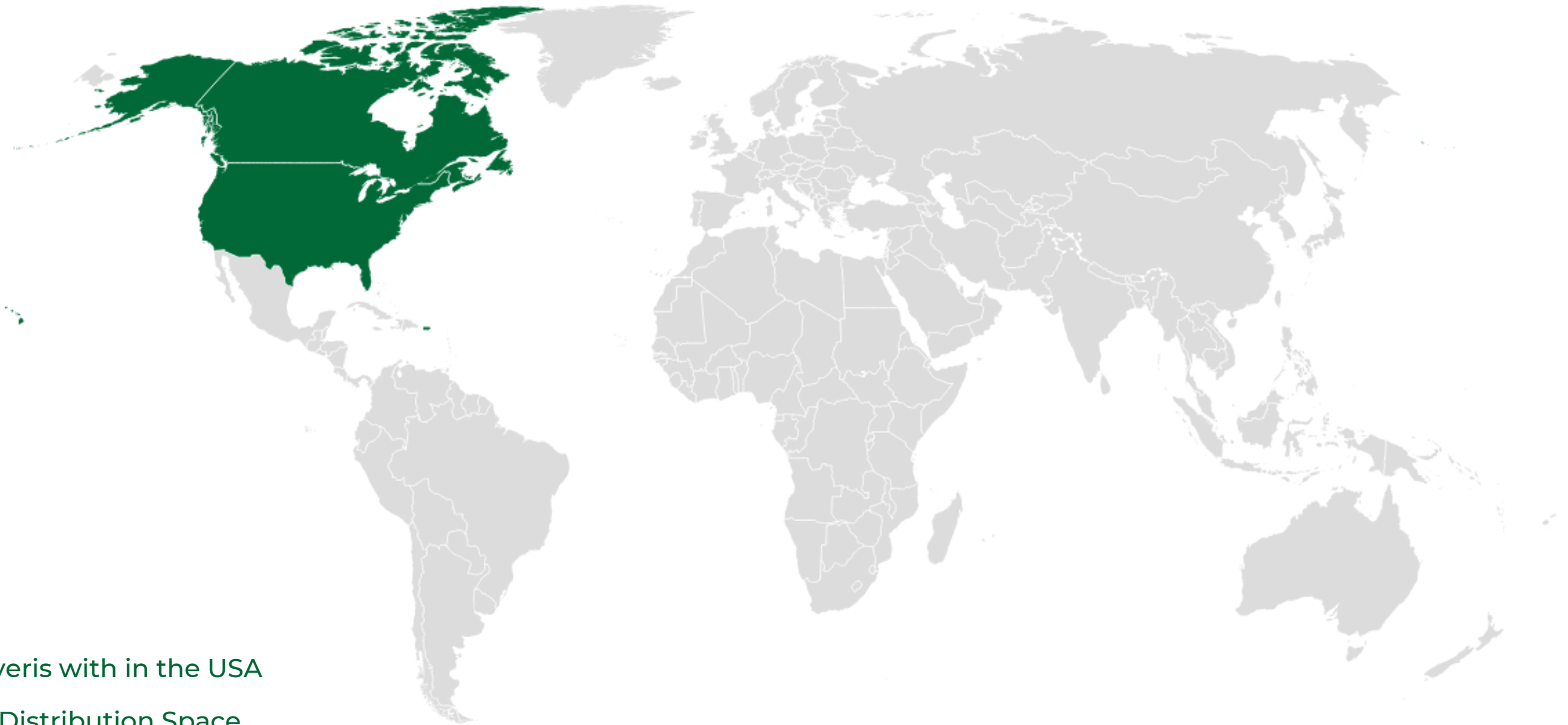
Japan





ALPI Service

- Refrigerated & Frozen Storage & Delivery
- Customer Clearance
- Delivery throughtout USA
- Track & Trace
- Pick & Pack
- Order Fulfillment
- Cross Dock
- White Glove



ALPI Warehouse & Logistics

- Temperature - Controlled deliveris with in the USA
- Dedicated & Multi - Customer Distribution Space
- Freight Rate & Transit Time Optimization
- Food - Grade Space available
- Temperature - Controlled Space avilable
- E - Commerce & System Integration
- Tailored Warehousing and Logistics solution

Canada

USA





Certifications & Accreditations



International Air Transport Association



European Custom Authorized Economic Operator



National Civil Aviation Authority



International Civil Aviation Organization



Customs Trade Partnership Against Terrorism of U.S. Customs and Border Protection



Food and Drug Administration



American Society of Industrial Security



Transport Asset Protection Association

The Company adopts an Organizational Model for Management and Internal Control, prepared pursuant to Legislative Decree No. 231/2001.



ALBINI & PITIGLIANI

INTERNATIONAL FREIGHT FORWARDERS

www.alpiworld.com



All rights reserved. VAT IT01027240488 - PEC: albinipitigliani@pec.uipservizi.it -
Legal Head Office: Prato - Viale Guglielmo Marconi, 46 (PO) 59100 - R.E.A. Prato 100931 - Cod. Fiscale e Reg. Imprese Prato 01027240488 -
Identification Number: X46AXNR - Cap. Soc €2.150.000 int.vers.